

# INSTRUCTIONS FOR INSTALLING SARGENT® 3727 SERIES VERTICAL ROD EXIT DEVICE

US PATENT No 268003  
CANADIAN PATENT No RD1901

## CAUTION!

- BEFORE STARTING:  
- DOOR SHOULD BE FITTED AND HUNG;  
- CHECK BOX LABEL FOR HAND & SIZE OF EXIT DEVICE.

## AVAILABLE STOCK LENGTHS:

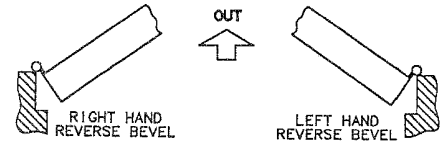
- LENGTH "E" - 32" DOOR, NO CUT REQUIRED.  
CAN BE CUT TO FIT DOORS DOWN TO 24" WIDE.  
LENGTH "F" - 36" DOOR, NO CUT REQUIRED.  
CAN BE CUT TO FIT DOORS DOWN TO 30" WIDE.  
LENGTH "G" - 48" DOOR, NO CUT REQUIRED.  
CAN BE CUT TO FIT DOORS DOWN TO 36" WIDE.

## IMPORTANT:

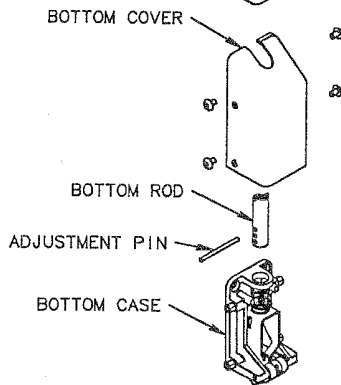
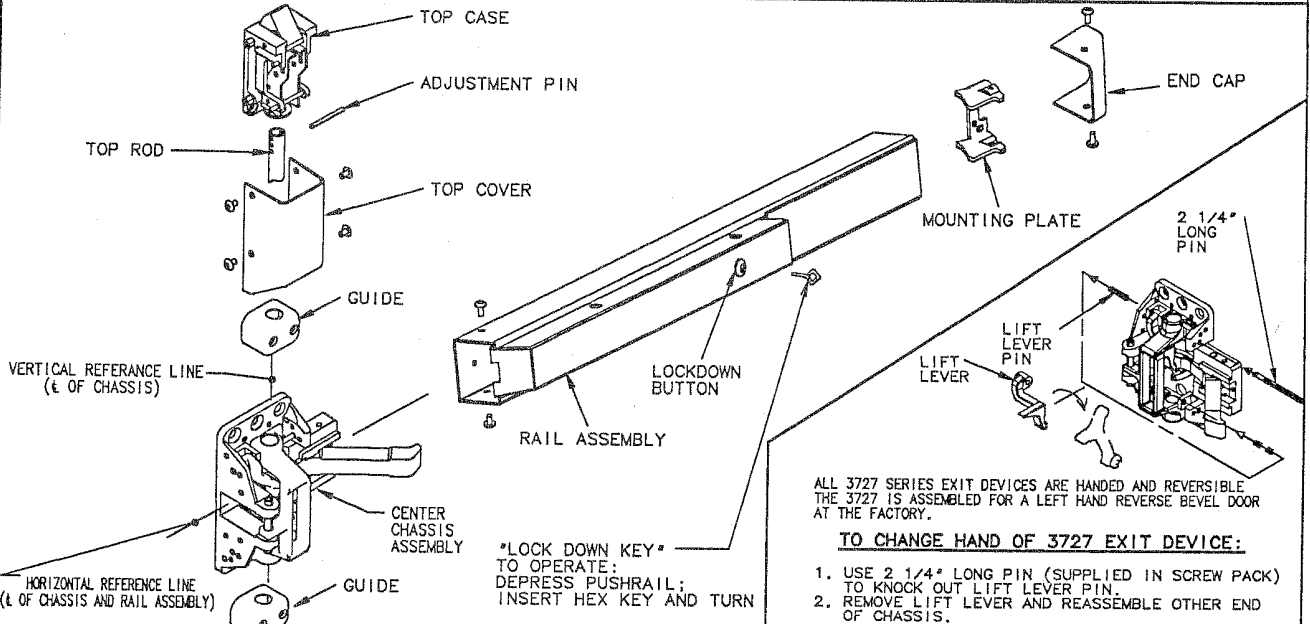
- FOR RIM CYLINDER APPLICATIONS:  
INSTALL CYLINDER TAIL WASHER TO CYLINDER  
TAIL PIECE. SEE STEP THREE FOR DETAILS.
- SURFACE OF THE DOOR WHERE EXIT DEVICE  
IS TO BE APPLIED, MUST BE FLUSH,  
CLEAR AWAY ANY RAISED PROJECTIONS  
TO ALLOW EXIT DEVICE TO REST  
ON FLAT SURFACE  
OF THE DOOR.



CYLINDER TAIL WASHER

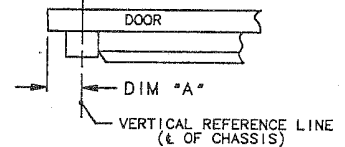
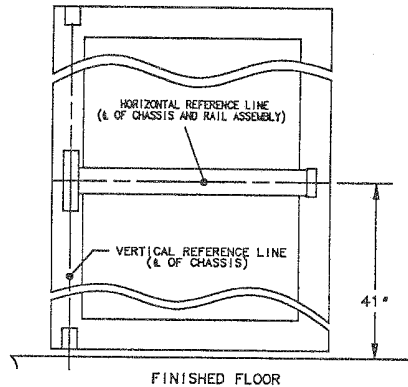


**THIS EXIT DEVICE IS HANDED**



## FIRST

- Ⓐ MARK VERTICAL AND HORIZONTAL  
REFERENCE LINES ON THE DOOR



## DETERMINE DIMENSION "A"

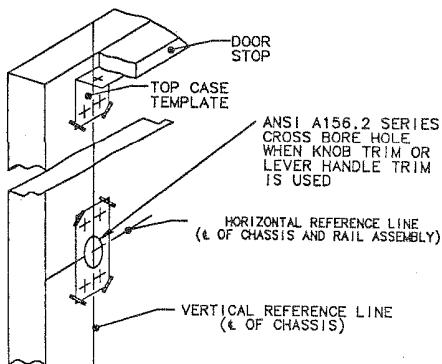
- IF LOCK STILE IS 4 1/2" WIDE OR WIDER, DIM A = 2 3/4"
- IF LOCK STILE IS LESS THAN 4 1/2" WIDE, DIM A = ONE HALF OF THE EXPOSED WIDTH OF LOCK STILE (WHEN DOOR IS CLOSED AGAINST STOP).

REFER TO DOOR TEMPLATE TO  
LOCATE HORIZONTAL REF. ℓ LINE

## SECOND

## PREPARE DOOR

TAPE TEMPLATE ON THE INSIDE OF THE DOOR ALONG REFERENCE  
LINES WITH SUPPLIED TAPE.  
IF DOOR ALREADY HAS ANSI DOOR PREP(161 CUT-OUT), OR  
HAS 2 1/8" DIA HOLE AT 2 3/4" BACKSET, POSITION TEMPLATE  
OVER EXISTING HOLE & SPOT & DRILL HOLES.



## THIRD

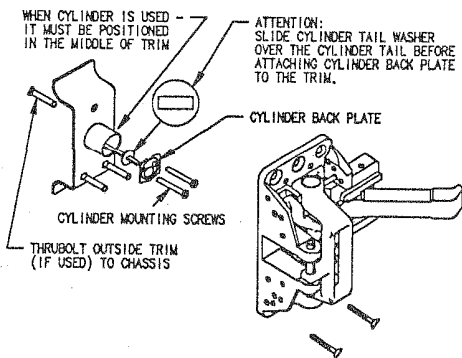
## APPLY HARDWARE

## FOR LEVER TRIM APPLICATIONS

SEE SEPARATE INSTRUCTION SHEET,  
PACKED WITH TRIM

### THIRD APPLY HARDWARE (CONTINUED)

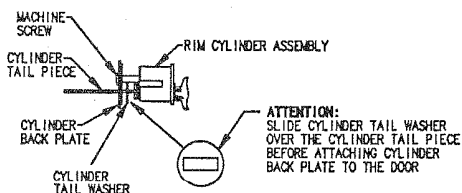
#### FOR 28-K-HTB APPLICATION



#### FOR RIM CYLINDER ONLY APPLICATION

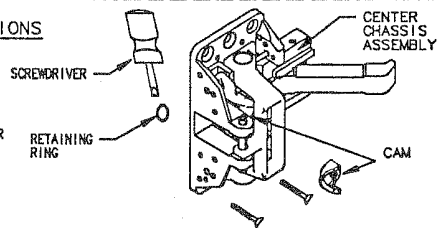
ATTENTION: USE STANDARD SHIMS FOR CENTER CHASSIS MOUNTING

ATTENTION: MOUNT CYLINDER TO DOOR BEFORE MOUNTING CHASSIS

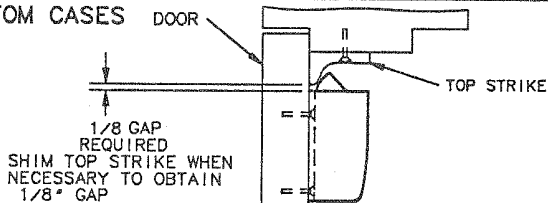
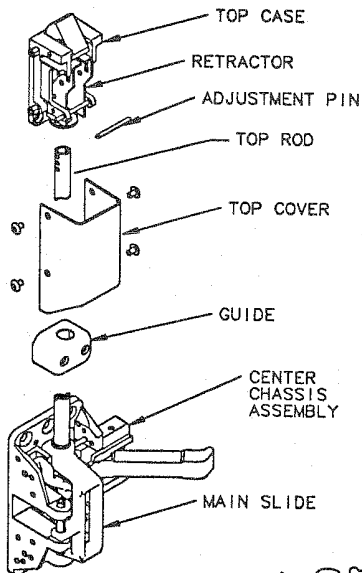


#### FOR EXIT ONLY APPLICATIONS

USING RETAINING RING PLIERS (NOT SHOWN) OR SCREWDRIVER TO REMOVE RETAINING RING FROM THE CAM. REMOVE AND DISCARD CAM FROM THE CENTER CHASSIS ASSEMBLY FOR FLUSH MOUNTING. ATTACH CHASSIS WITH FOUR #10 WOOD OR MACHINE SCREWS

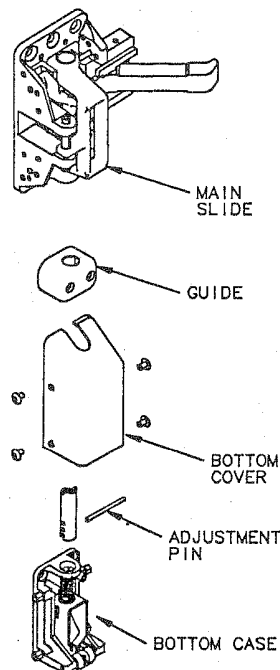
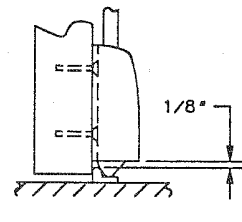
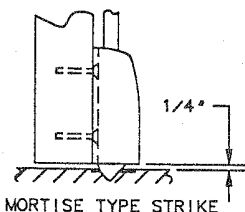


### FOURTH INSTALL TOP & BOTTOM CASES



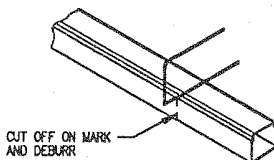
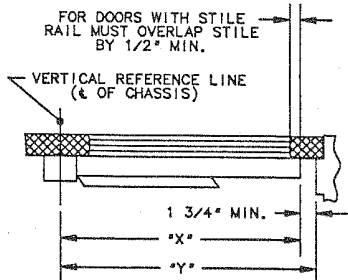
1. MOUNT TOP STRIKE ACCORDING TO LOCATION MARKED IN SECOND STEP. USE #10 STEEL SCREWS PROVIDED.
2. ENSURE PUSH RAIL IS NOT LOCKED DOWN. SCREW TOP ROD INTO MAIN SLIDE.
3. SLIDE GUIDE & COVER ONTO TOP ROD AND ASSEMBLE TO TOP CASE BY INSERTING ADJUSTING PIN THRU RETRACTOR AND MIDDLE HOLE IN ROD. (SEE ILLUSTRATION AT LEFT). ADJUST SO THAT TOP CASE MOUNTING HOLES LINE UP WITH LOCATION MARKED IN SECOND STEP.
4. MOUNT BOTTOM CASE IN SAME MANNER AS TOP CASE. (SEE ILLUSTRATIONS BELOW FOR VARIOUS STRIKE APPLICATIONS).
5. SECURE GUIDES

NOTE: IF SHORTER RODS ARE REQUIRED, CUT TO LENGTH & DRILL  $\phi 1/8"$  HOLE THRU.  $\phi$

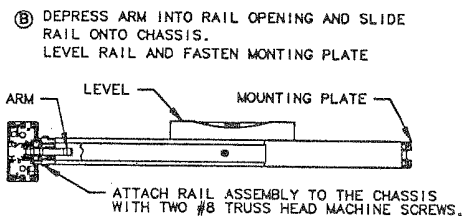


### FIFTH INSTALL RAIL ASSEMBLY

- CHECK BOX LABEL. IF CUTTING IS NOT REQUIRED PROCEED TO STEP "B".
  - IF CUTTING IS REQUIRED, CONTINUE WITH STEP "A".
- Ⓐ DETERMINE CUT OFF DIMENSION "X" BY SUBTRACTING  $1\ 3/4"$  FROM DIMENSION "Y". MARK CUT OFF POINT ON MOUNTING RAIL.



PLACE MOUNTING PLATE TIGHT AGAINST RAIL AND ATTACH IT TO THE DOOR WITH THREE #10 ROUND HEAD SCREWS



### SIXTH APPLY COVERS

