

INSTRUCTIONS FOR INSTALLING SARGENT® 12-3727 SERIES FIRE RATED VERTICAL ROD EXIT DEVICE

US PATENT No 268003
CANADIAN PATENT No R01901

CAUTION!

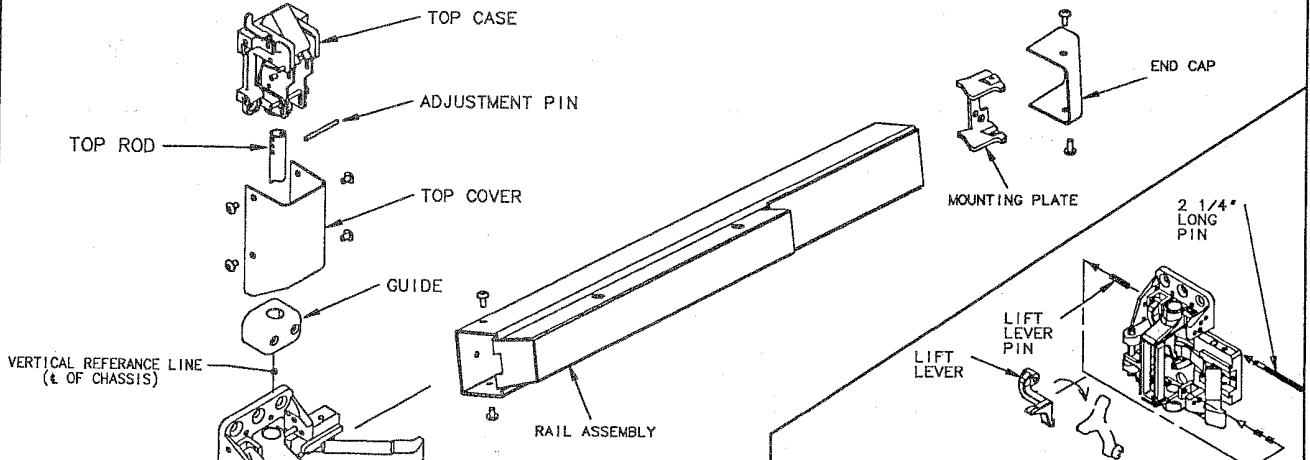
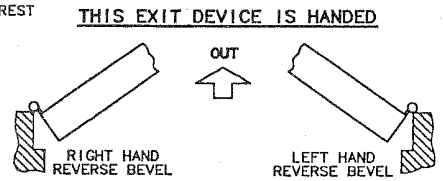
- BEFORE STARTING:
- DOOR SHOULD BE FITTED AND HUNG;
- CHECK BOX LABEL FOR HAND & SIZE OF EXIT DEVICE.

AVAILABLE STOCK LENGTHS:

- LENGTH "E" - 32" DOOR, NO CUT REQUIRED.
CAN BE CUT TO FIT DOORS DOWN TO 24" WIDE.
LENGTH "F" - 36" DOOR, NO CUT REQUIRED.
CAN BE CUT TO FIT DOORS DOWN TO 30" WIDE.
LENGTH "G" - 48" DOOR, NO CUT REQUIRED.
CAN BE CUT TO FIT DOORS DOWN TO 36" WIDE.

IMPORTANT:

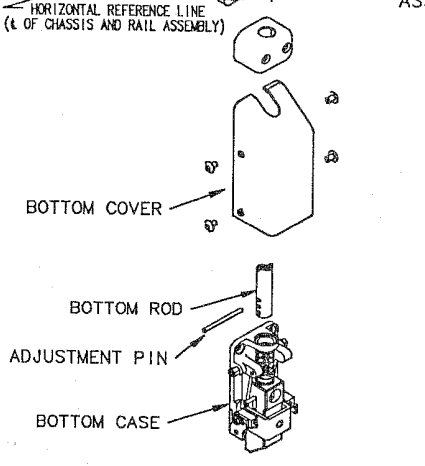
- FOR RIM CYLINDER APPLICATIONS: →
INSTALL CYLINDER TAIL WASHER TO CYLINDER
TAIL PIECE. SEE STEP THREE FOR DETAILS.
- SURFACE OF THE DOOR WHERE EXIT DEVICE
IS TO BE APPLIED, MUST BE FLUSH,
CLEAR AWAY ANY RAISED PROJECTIONS
TO ALLOW EXIT DEVICE TO REST
ON FLAT SURFACE
OF THE DOOR.



ALL 12-3727 SERIES EXIT DEVICES ARE HANDED AND REVERSIBLE.
THE 12-3727 IS ASSEMBLED FOR A LEFT HAND REVERSE BEVEL DOOR
AT THE FACTORY.

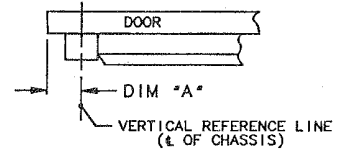
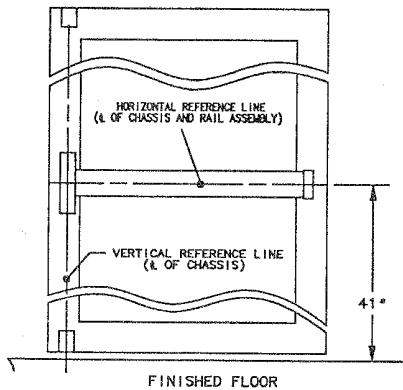
TO CHANGE HAND OF 12-3727 EXIT DEVICE:

- USE 2 1/4" LONG PIN (SUPPLIED IN SCREW PACK)
TO KNOCK OUT LIFT LEVER PIN.
- REMOVE LIFT LEVER AND REASSEMBLE OTHER END
OF CHASSIS.



FIRST

- Ⓐ MARK VERTICAL AND HORIZONTAL
REFERENCE LINES ON THE DOOR



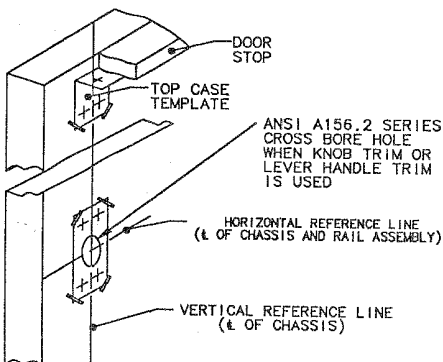
DETERMINE DIMENSION "A"

- IF LOCK STILE IS 4 1/2" WIDE OR WIDER, DIM A = 2 3/4"
- IF LOCK STILE IS LESS THAN 4 1/2" WIDE, DIM A = ONE HALF OF THE EXPOSED WIDTH OF LOCK STILE (WHEN DOOR IS CLOSED AGAINST STOP).

REFER TO DOOR TEMPLATE TO LOCATE HORIZONTAL REF. LINE

SECOND PREPARE DOOR

TAPE TEMPLATE ON THE INSIDE OF THE DOOR ALONG REFERENCE LINES WITH SUPPLIED TAPE.
IF DOOR ALREADY HAS ANSI DOOR PREP (161 CUT-OUT), OR HAS 2 1/8" DIA HOLE AT 2 3/4" BACKSET, POSITION TEMPLATE OVER EXISTING HOLE & SPOT & DRILL HOLES.



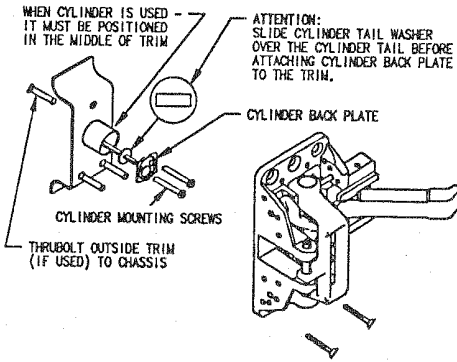
THIRD APPLY HARDWARE

FOR LEVER TRIM APPLICATIONS

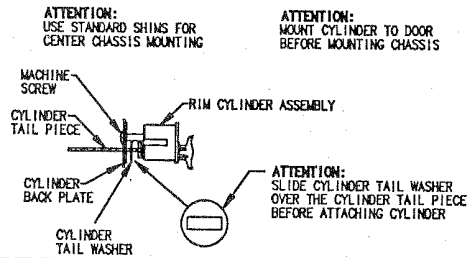
SEE SEPARATE INSTRUCTION SHEET,
PACKED WITH TRIM

THIRD APPLY HARDWARE (CONTINUED)

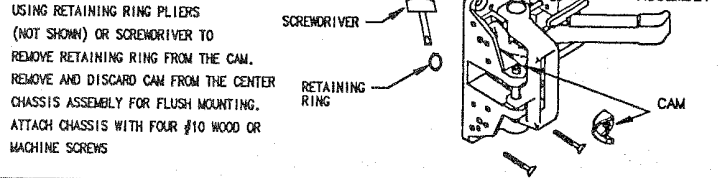
FOR 28-K-HTB APPLICATION



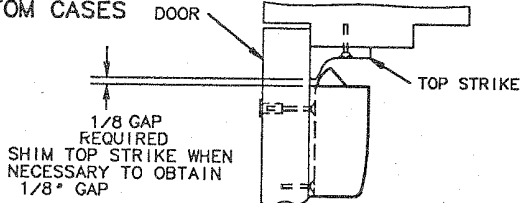
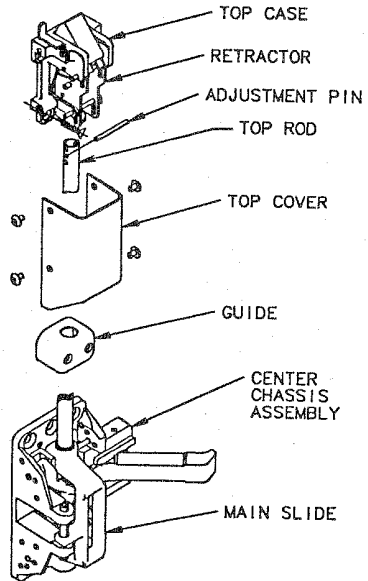
FOR RIM CYLINDER ONLY APPLICATION



FOR EXIT ONLY APPLICATIONS

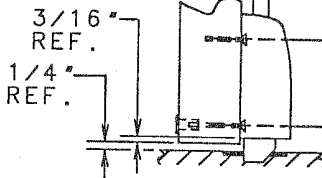
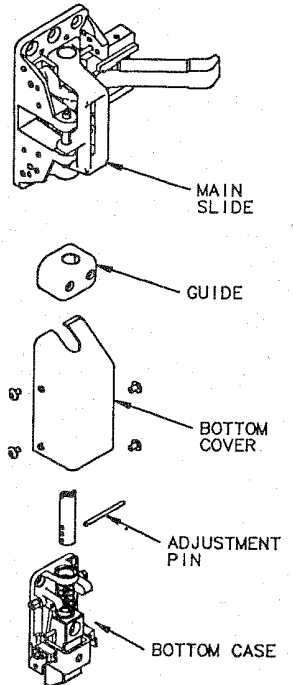


FOURTH INSTALL TOP & BOTTOM CASES



1. MOUNT TOP STRIKE ACCORDING TO LOCATION MARKED IN SECOND STEP. USE #10 STEEL SCREWS & MORTISE NUTS (WHEN PROVIDED) IN THE POSITION ILLUSTRATED IN THE TOP & BOTTOM CASES.
2. ENSURE PUSH RAIL IS NOT LOCKED DOWN. SCREW TOP ROD INTO MAIN SLIDE.
3. SLIDE GUIDE & COVER ONTO TOP ROD AND ASSEMBLE TO TOP CASE BY INSERTING ADJUSTING PIN THRU RETRACTOR AND MIDDLE HOLE IN ROD. (SEE ILLUSTRATION AT LEFT). ADJUST SO THAT TOP CASE MOUNTING HOLES LINE UP WITH LOCATION MARKED IN SECOND STEP.
4. MOUNT BOTTOM CASE IN SAME MANNER AS TOP CASE. (SEE ILLUSTRATION AT RIGHT). TO PREVENT BOTTOM BOLT FROM CONTACTING FLOOR, ADJUST BOLT WHILE EXIT DEVICE IS IN THE HOLD OPEN POSITION.
5. SECURE GUIDES.

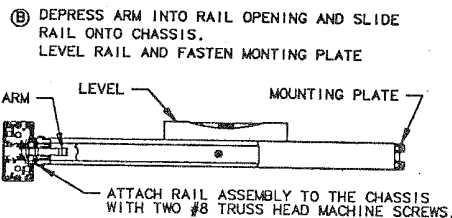
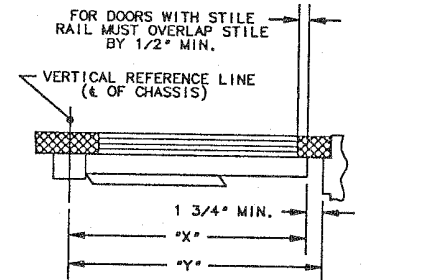
NOTE: IF SHORTER ROD ARE REQUIRED, CUT TO LENGTH & DRILL $\phi 1/8"$ HOLE THRU.



MORTISE TYPE STRIKE

FIFTH INSTALL RAIL ASSEMBLY

- CHECK BOX LABEL. IF CUTTING IS NOT REQUIRED PROCEED TO STEP "B".
 - IF CUTTING IS REQUIRED, CONTINUE WITH STEP "A".
- A DETERMINE CUT OFF DIMENSION "X" BY SUBTRACTING $1 \frac{3}{4}"$ FROM DIMENSION "Y". MARK CUT OFF POINT ON MOUNTING RAIL.



CUT OFF ON MARK AND DEBURR

PLACE MOUNTING PLATE TIGHT AGAINST RAIL AND ATTACH IT TO THE DOOR WITH THREE #10 ROUND HEAD SCREWS

SIXTH APPLY COVERS

