

PELLA STORM DOORS: OWNER'S MANUAL AND INSTALLATION GUIDE

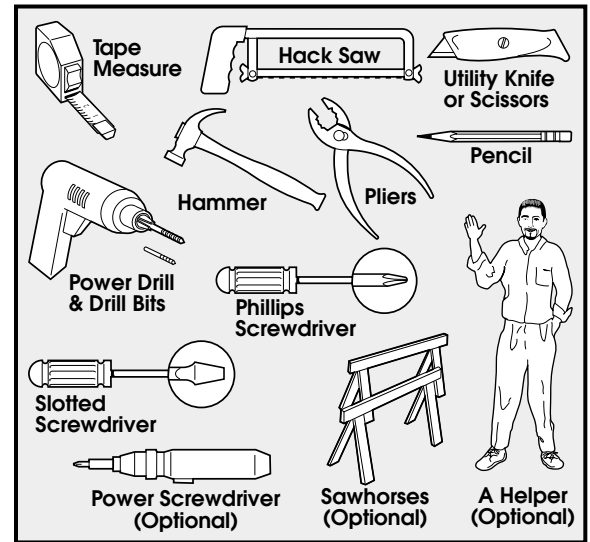


PELLA WOODCORE MODELS

Congratulations on choosing a Pella storm door to beautify and protect your home. This superior quality door has been designed and constructed for years of trouble-free service. This owner's manual contains valuable information about your door and a step-by-step installation guide to ensure proper installation and utilization of this product.

PLEASE NOTE:

- ▶ These assembly and installation instructions have been designed to make the process of installing a storm door as easy as possible. Please follow the steps in each section carefully and in order. Because the instructions vary slightly between models, your "next" step may not always be adjacent to the previous step.
- ▶ The tools required for installing a Pella door are illustrated on this page.
- ▶ Handle your door carefully to avoid scratches or other damage.
- ▶ Before discarding the carton make sure all the parts are accounted for.
- ▶ For easy identification the fastener illustrations in each step are actual size.



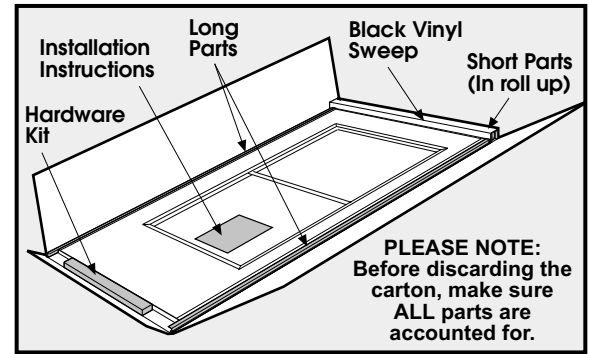
Need A Part?

**DON'T GO BACK TO YOUR STORE!
CALL OUR PARTS HOTLINE
Toll-Free 1-888-646-5354**
You will need your model and registration numbers

Record your information for future reference.

Door Model Number _____
Registration Number (See Section A, Step 2) _____

Your local retailer does not stock parts for our doors. If you need PARTS, call Pella's toll-free hot line. Even if you've cut a part incorrectly--we can help. Your satisfaction is Pella's number one priority. Call us, and our expert representatives will ship the part(s) you need within 24 hours of your request. Please record your model and registration numbers in the spaces provided and have your model and registration numbers when calling.



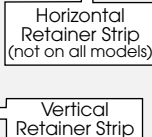
A GETTING STARTED

STEP 1 To make the door lighter and easier to install, remove the glass and screen panels as indicated. See page 7 of this Owner's Manual and Installation Guide on how to remove your glass and screen. Follow the step indicated for your style of glass.

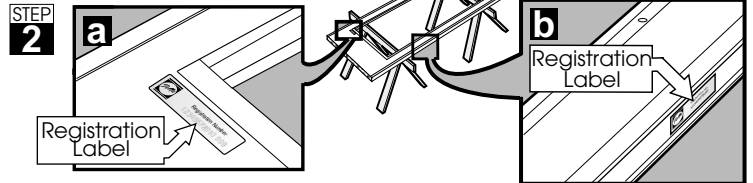
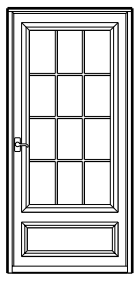
Self-Storing Glass and Screen
Follow Step 1SS



Interchangeable Glass and Screen
Follow Step 1FV



Decorative Grid
Follow Step 1GR



Set the door on sawhorses or any other flat surface with the inside of the door facing up - this is the side that allows glass and screen removal (step 1). Take precautions to prevent scratching or damaging the door.

The registration label is located in one of two places - depending on door model: **Do not remove this registration label.**

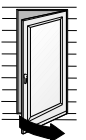
1. At the lower left corner of the window frame (2a).
2. On the edge of the door frame (2b).

PLEASE NOTE:

Pella storm doors incorporate a reversible hinge system allowing the hinge and hardware to be positioned to suit your needs.

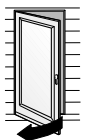
RIGHT HINGE INSTALLATIONS:

If you want the door hinged on the *right* when installed and viewed from the *outside*:
SKIP SECTION C COMPLETE SECTION D



LEFT HINGE INSTALLATIONS:

If you want your door hinged on the *left* when installed and viewed from the *outside*:
COMPLETE SECTION C SKIP SECTION D



Please Recycle

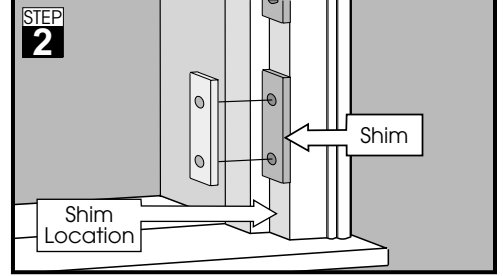
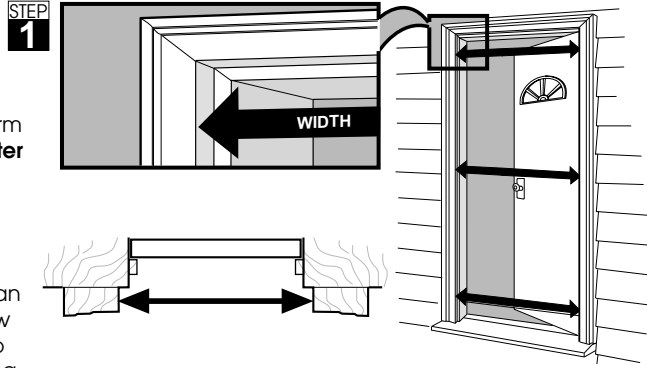
The carton and scrap aluminum are recyclable if facilities are available in your community to handle these materials.

Measure the entryway door opening width in three places as shown.

The opening should be between, 1/8" **less** than the storm door stock width and 3/8" **greater** than the stock width.

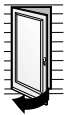
For example, a stock width 36" storm door requires an opening of 35-7/8" to 36-3/8".

NOTE: If the opening is **more** than 1/8" from the stock width, Follow the shimming instructions in step 2. This allows optimal functioning of your door and hardware.



Shims may be **one** piece, or **four** 8" sections placed to correspond with the **hinges** of the door. Use a flat piece of wood, 3/4" wide and the required thickness. Attach using small nails.

C PRE-ASSEMBLY FOR LEFT HINGE OPERATION

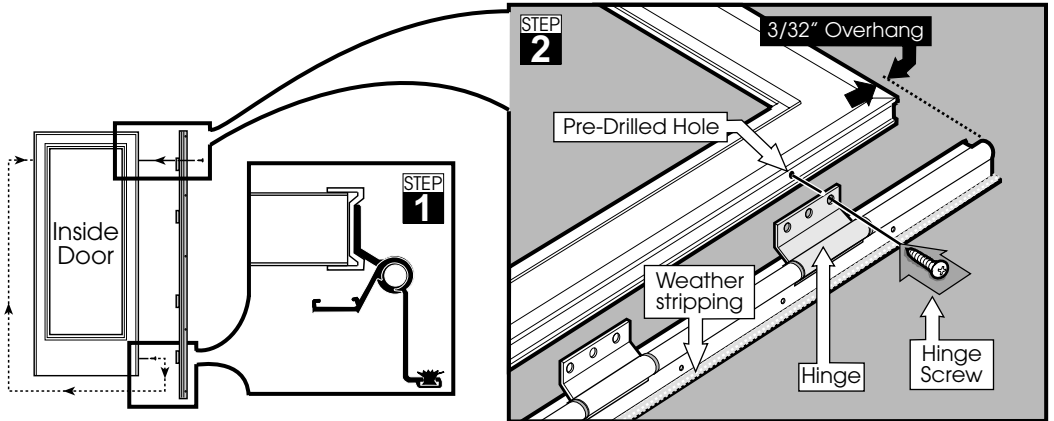


Left hinged door
Viewed from outside

PLEASE NOTE:

In this section you will prepare your door for a *left* hinge installation (as viewed from outside.) Skip section D when complete.

If your door is to be configured for a *right* hinge operation, skip this section and proceed with Section D.



With the **inside** of the door facing up, align the hinge side mounting frame on the **right** side of the door as shown in step 1.

Install a hinge screw into the **top hinge hole** location at the top of the door as shown in step 2. Make certain you have about a **3/32"** overhang at the top of the door.

At the **bottom hinge** location, remove (save*) the factory installed screw located behind the hinge and install a hinge screw through the hinge into the open hole location.

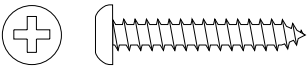
At the **ten** remaining hinge hole locations, center punch and predrill using a **3/32"** drill bit.

Install **ten** hinge screws at the hinge locations.

* Install the factory screw into the open hole on the opposite side of the door frame edge.

Skip section D, go to section E on page 3.

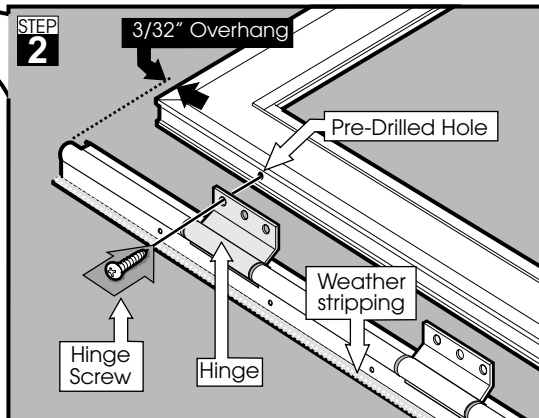
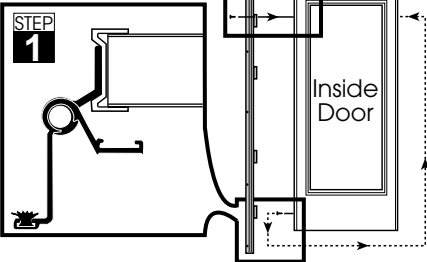
Hinge Screw qty 12
#8 x 1" Phillips, unpainted



D PRE-ASSEMBLY FOR RIGHT HINGE OPERATION



Right hinged door
Viewed from outside



With the **inside** of the door facing up, align the hinge side mounting frame on the **left** side of the door as shown in step 1.

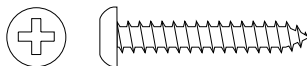
Install a hinge screw into the **top hinge hole** location at the top of the door as shown in step 2. Make certain you have about a **3/32"** overhang at the top of the door.

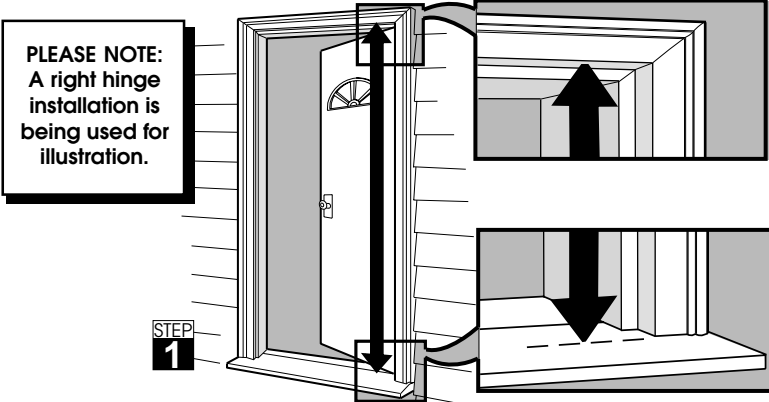
At the **bottom hinge** location, remove (save*) the factory installed screw located behind the hinge and install a hinge screw through the hinge into the open hole location.

At the **ten** remaining hinge hole locations, center punch and predrill using a **3/32"** drill bit. Install **ten** hinge screws at the hinge locations.

* Install the factory screw into the open hole on the opposite side of the door frame edge.

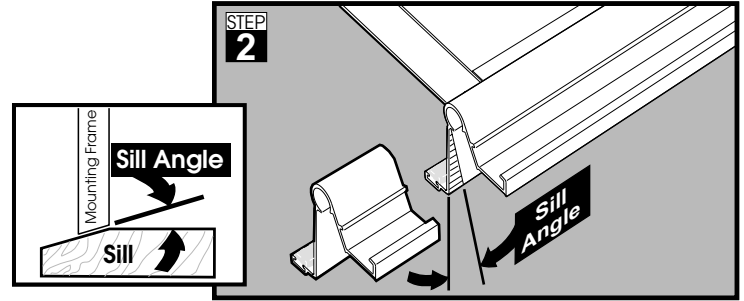
Hinge Screw qty 12
#8 x 1" Phillips, unpainted





STEP 1
Measure the entryway door opening height on the side the hinge is to be mounted.

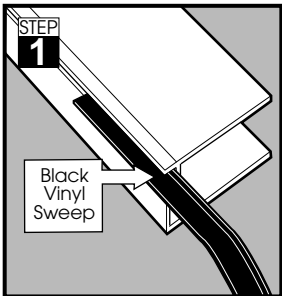
Subtract 1/8" from this measurement to determine the hinge side mounting frame length.



STEP 2
Turn the door over so the outside of the door faces up. Using the measurement from step 1 (**Be sure to subtract 1/8"**), measure the distance from the **top** of the hinge side mounting frame. Cut to length **AT THE BOTTOM** of the hinge side mounting frame.

PLEASE NOTE: If your entryway sill has an angled slope, an angle cut will be required.

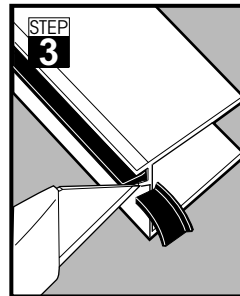
F EXPANDER INSTALLATION part one



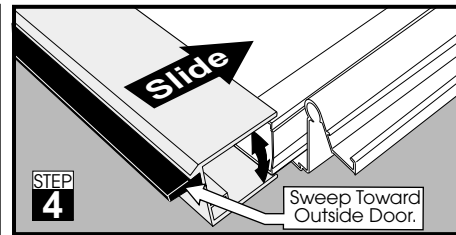
STEP 1
PLEASE NOTE: Steps 1 through 3 are for doors with aluminum expanders. Slide the black vinyl sweep into the groove of the expander and pull it to the other end. Be certain to cover the length of the expander.



STEP 2
Pinch the ends of the expander with a pliers as shown to hold the black vinyl sweep locked in position.



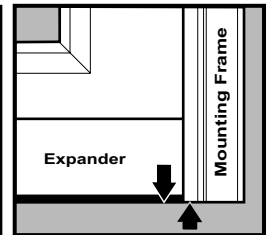
STEP 3
Trim off any excess vinyl sweep extending beyond the expander.



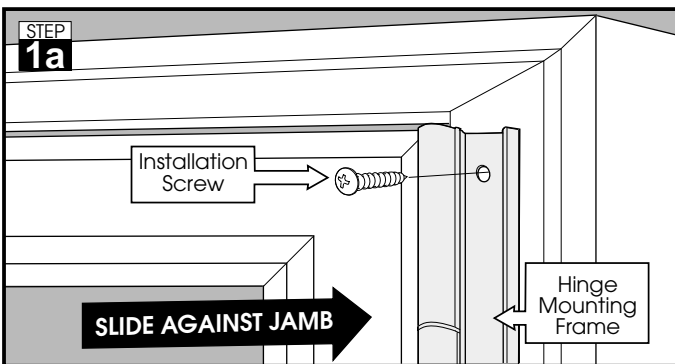
STEP 4
To install the bottom expander: In most installations the vinyl sweep should be toward the **outside** of the door. Start at one end - place **one** leg of the expander on the outside door surface and spread the other leg open to fit onto the inside door surface as shown by the arrows. Repeat this for the other end of the expander.

Slide the expander up so it is **even** with the **bottom** of the hinge mounting frame as shown.

PLEASE NOTE: Do not install the screws used to secure the expander at this time. This will be done later in section J.



G DOOR INSTALLATION



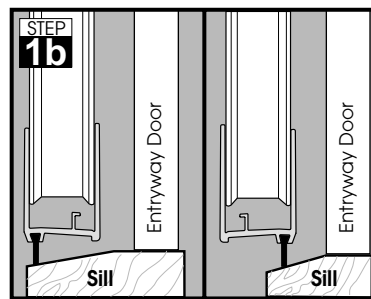
STEP 1a
Set the door in place in the entryway opening and slide the **hinge** side of the door tight against the entryway jamb (brickmold).

Have a helper verify that the expander sweep will make contact with the sill as shown in step 1b. If not, lay the door flat and reverse the expander so the sweep is toward the inside of the door.

Install an installation screw at the **top** hole location. Check to be sure the door operates properly.

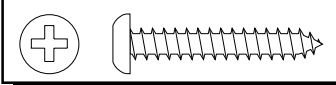
Centerpunch and predrill using a 3/32" drill bit at the remaining mounting frame hole locations.

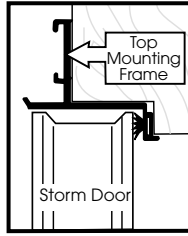
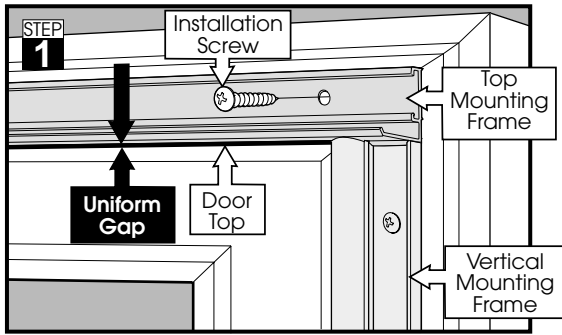
Install **four** installation screws.



STEP 1b
STEP 2
Pivot the door **open**. Centerpunch and predrill using a 3/32" drill bit at the holes in the **hinge** side mounting frame as indicated. Install **eight** installation screws.

Installation Screw qty 13
#8 x 1" Phillips





Open the door and position the **top** mounting frame so it rests on the **hinge** side mounting frame as shown.

Close the door, and align the end of the **top** mounting frame with the edge of the **hinge** side vertical mounting frame.

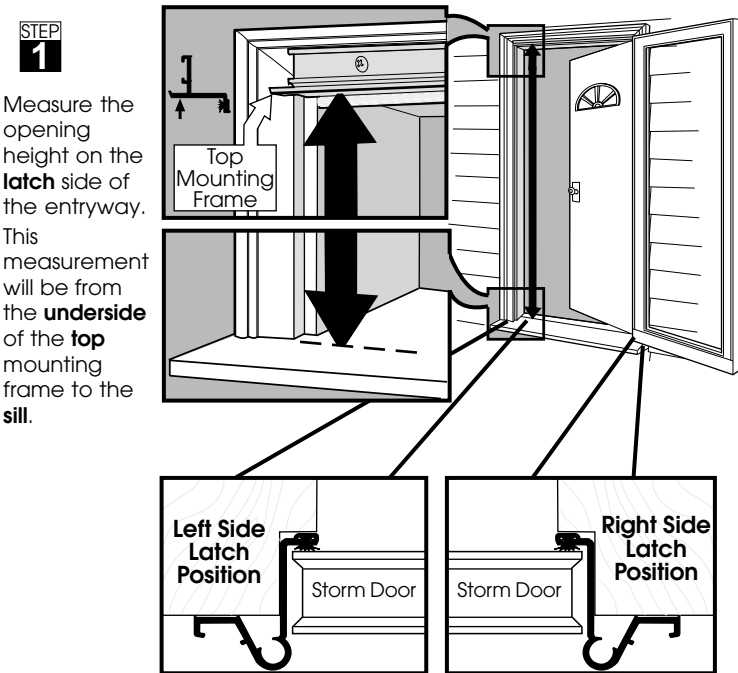
Adjust to achieve a uniform gap between the **top** mounting frame and the **door**.

Centerpunch and predrill using a 3/32" drill bit at the holes in the top mounting frame.

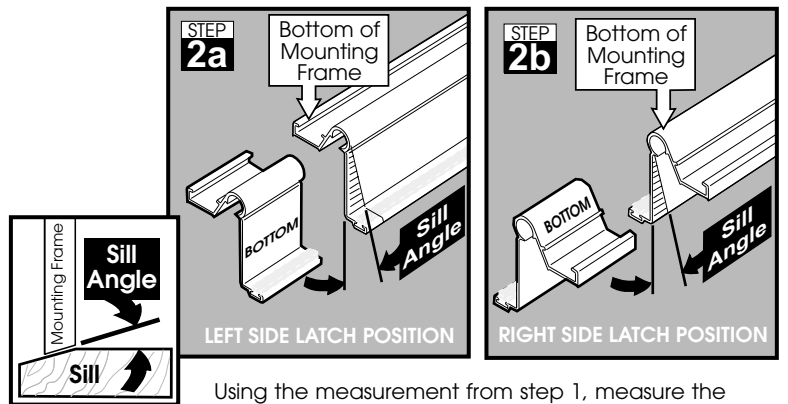
Install **three** installation screws.

Installation Screw qty 3
#8 x 1" Phillips

I LATCH SIDE MOUNTING FRAME



Measure the opening height on the **latch** side of the entryway. This measurement will be from the **underside** of the **top** mounting frame to the **sill**.

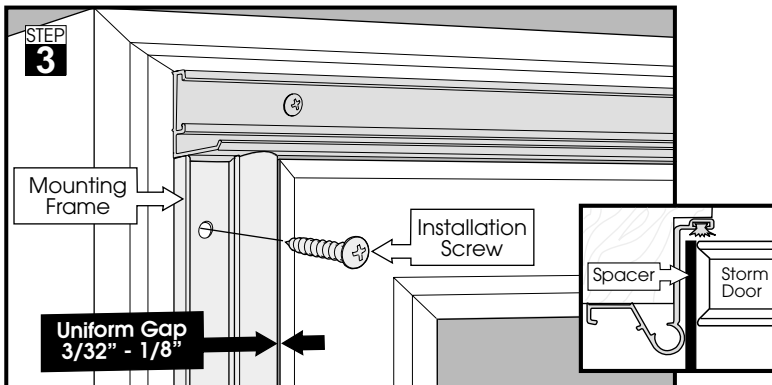


Using the measurement from step 1, measure the distance from the **top** of the **latch** side mounting frame and cut the mounting frame to length at the **bottom**.

Step 1 indicates the latch orientation for a **left** or **right** side placement. Be certain to identify which end is the **bottom** of the mounting frame for your installation.

PLEASE NOTE: Step 2a shows a latch side mounting frame for a **left** side latch installation. Step 2b shows a latch side mounting frame for a **right** side latch installation.

PLEASE NOTE: If your entryway sill has an angled slope, an angled cut will be required.

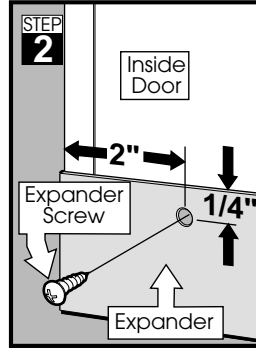
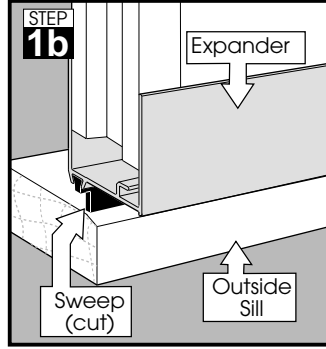
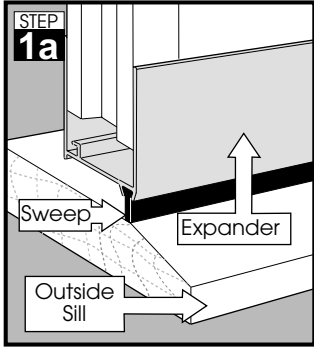


Position the **latch** side mounting frame in the entryway with a uniform **3/32"** to **1/8"** gap between the mounting frame and the door when closed.

PLEASE NOTE: For a uniform gap between the door and the mounting frame, slide a **1/8"** thick shim to each hole location as needed. A **dime** and **penny** held together will work

Install **five** installation screws into the holes in the **latch** side mounting frame. Centerpunch and predrill using a 3/32" drill bit.

Installation Screw qty 5
#8 x 1" Phillips



PLEASE NOTE: Some models come equipped with a vinyl expander - use the proper drill bit and screw illustrated for your expander.

From the inside, center punch a hole, **2"** in and **1/4"** down from each end.

For models with vinyl expanders, use a **1/8"** drill bit - for aluminum expanders, use a **3/32"** (or **7/64"**) drill bit.

Drill two holes, **3/8"** deep or less, through the expander.

PLEASE NOTE: To make certain you **do not** drill too far into the door, use a piece of tape to mark the hole depth (**3/8"**) on the drill bit.

Install **two** expander screws in the holes using a **hand screwdriver** not a power screwdriver.

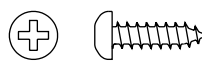
Close the door and carefully adjust the **expander** so the sweep lightly contacts the sill. Be careful not to scratch the door.

PLEASE NOTE: In most installations, the sweep should be positioned toward the outside. If you installed the expander with the sweep toward the inside, as shown in step 1b. Cut the sweep **1/2"** from each end to allow for moisture drainage.

Center the expander between the vertical edges of the door.

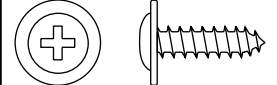
Use with Aluminum Expander
Expander Screw

#6 x 1/2" Phillips qty 2

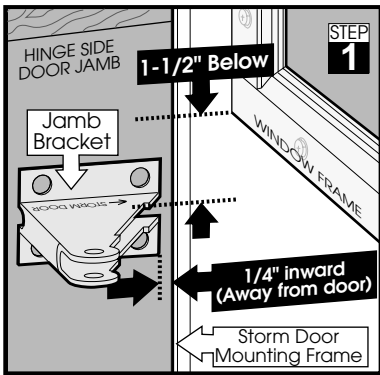


Use with Vinyl Expander
Expander Screw

#8 x 9/16" Phillips qty 2

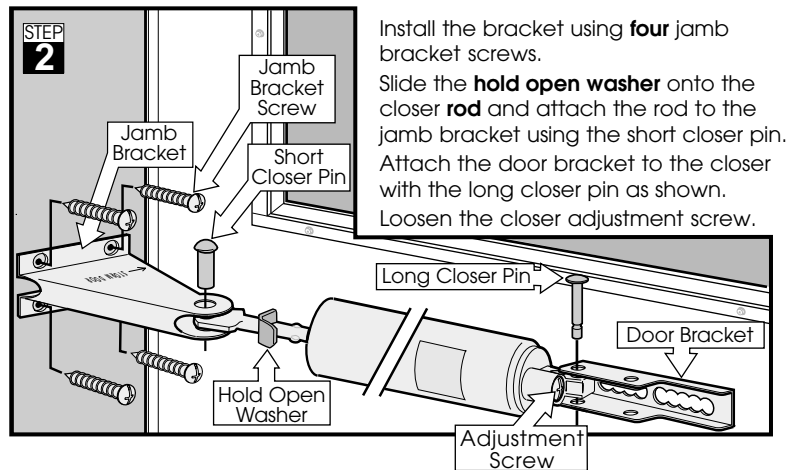


K CLOSER INSTALLATION



Review the picture in STEP 2 to become familiar with the closer assembly. With the door closed, from the **inside**, position the **jamb bracket** (on hinge side jamb) approx. **1-1/2"** below the **bottom** of the storm door **window frame** and **1/4"** inward (away) from the storm door **mounting frame**.

Mark the **four** hole positions and predrill with a **1/8"** drill bit.

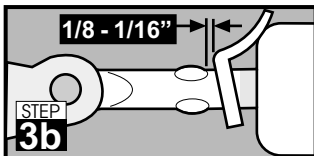
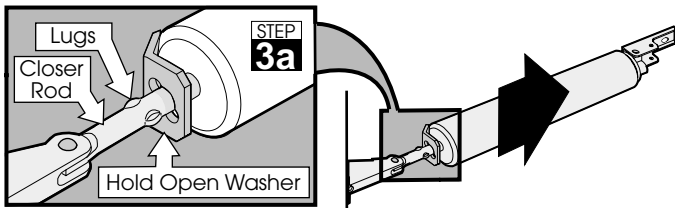


Install the bracket using **four** jamb bracket screws.

Slide the **hold open washer** onto the closer **rod** and attach the rod to the jamb bracket using the short closer pin.

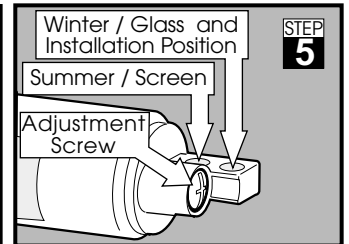
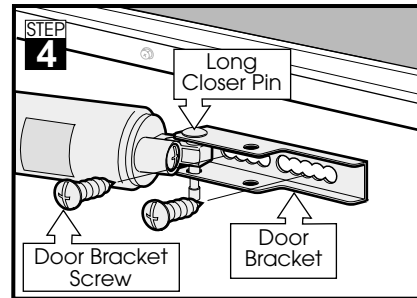
Attach the door bracket to the closer with the long closer pin as shown.

Loosen the closer adjustment screw.



Pull the closer tube to **extend** the **closer rod**. Slide the **hold open washer** past the **lugs** on the closer rod and then release the closer. See STEP 3a.

Adjust the hold open washer to achieve a distance of **1/8"** to **1/16"** between the **hold open washer** and the **lugs** as shown in step 3b.



With the door tightly **closed**, pivot the closer assembly so the **door bracket** contacts the door. Be sure the closer and bracket assembly are level.

Mark the **centers** of the two **slotted** holes and predrill using a **1/8"** drill bit to drill the hole **3/8"** deep.

PLEASE NOTE: To make certain you **do not** drill too far into the door, use a piece of tape to mark the hole depth (**3/8"**) on the drill bit.

Install door bracket screws to secure the bracket.

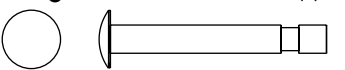
Check to see that the door operates properly. Reposition the door bracket if needed to ensure proper operation.

Install the **second** closer using the same method as the first. The second closer should be **centered** on the door frame, **between** the top of the **door** and the **window opening**.

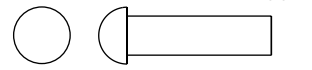
To adjust the closing **speed** of the door use the **adjustment screw** at the end of the closer. When the glass panel(s) are installed in your door, adjust the closer position to use the **winter/glass position**. Use the **summer/screen position** when using the screen panel(s).

NOTE: If the closer does not initially work properly, remove the adjustment screw, operate the closer a few cycles, then replace the adjustment screw.

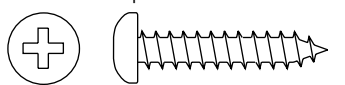
Long Closer Pin qty 2



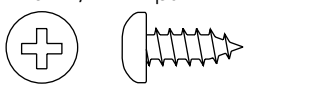
Short Closer Pin qty 2

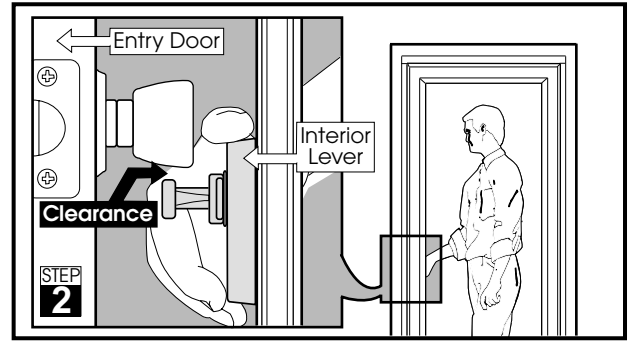
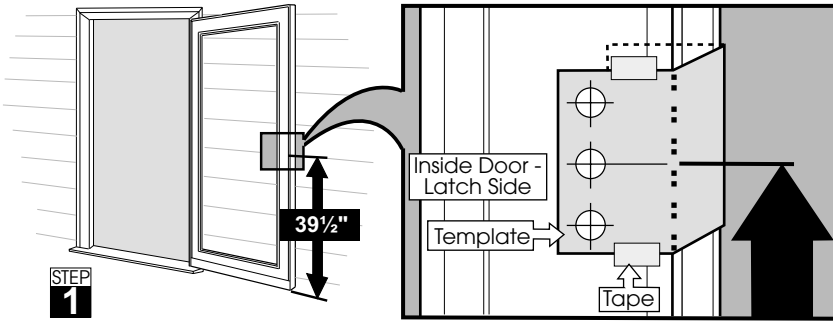


Jamb Bracket Screw qty 8
#10 x 1" Phillips



Door Bracket Screw qty 4
#10 x 1/2" Phillips





Cut out the template located at the bottom of this page and **fold** the template on the **two** lines as indicated.

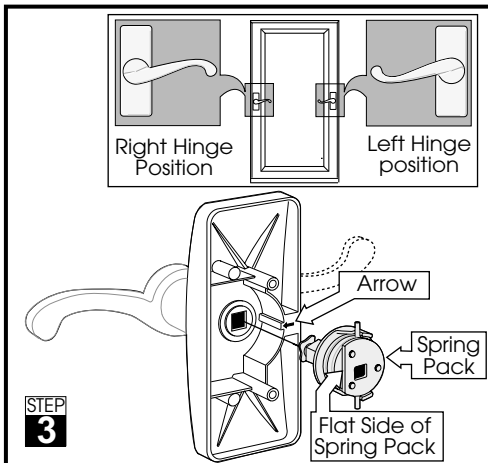
Place the template on the **latch** side of the door as shown. Align the **center** hole for the **inside lever**, 39-1/2" up from the **bottom** of the door.

Make certain the template holes are plumb (level) and tape the template in place.

Check to make sure the interior **lever**, if installed at the location indicated on the template, **will not** interfere with the knob or handle of your entry door.

Please note: If there is interference, with the latch, move the template up or down enough to correct the problem.

Centerpunch and drill **one side** of the template holes using a **5/16"** drill bit **halfway** through the door. **Repeat** for the **other side** of the template. Remove the template.

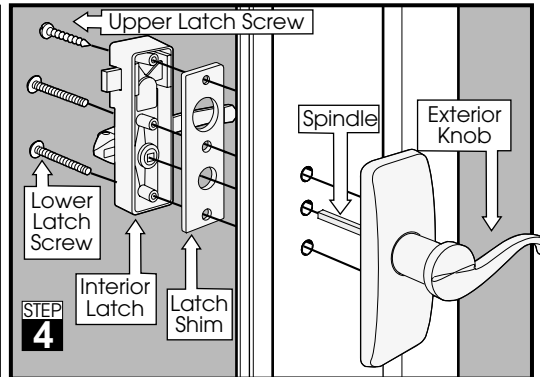


PLEASE NOTE: Your lever style may vary from the illustrations shown.

Determine whether you have a right or left hinged **door** installation (when viewed from the outside).

Rotate the exterior lever to the correct position for your installation and turn the lever over (making certain to keep the lever in its proper position).

Insert the spring pack **securely** into the opening with the **flat** side of the spring pack **away** from the **arrow** as shown .



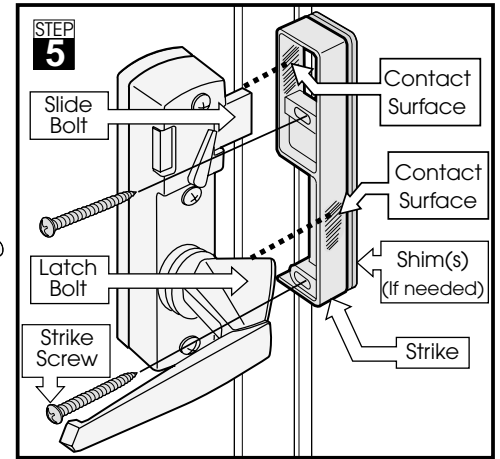
From the **outside** of the door, insert the spindle into the square opening on the backside of the exterior knob or lever. Set the lever (with spindle) into the holes drilled through the door.

From the **inside**, position the interior latch and latch shim onto the spindle. Note that the square hole in the interior latch lines up with the spindle extending through the door.

Secure using **two** lower latch screws into the **lower** two holes of the interior latch.

Install the upper latch screw in the **top** hole location, predrill using a **3/32"** drill bit, **1/2"** or less through the door.

PLEASE NOTE: To make certain you do not drill too far into the door, use a piece of tape to mark the drill depth (1/2") on the drill bit.

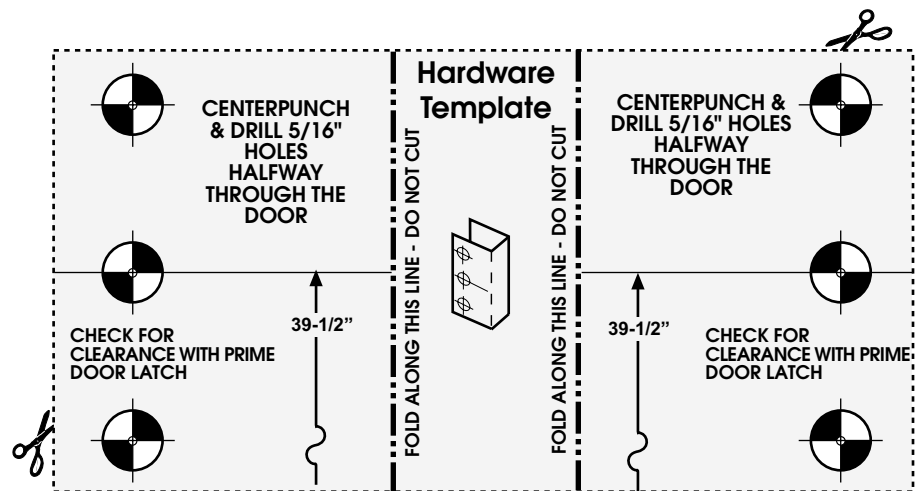
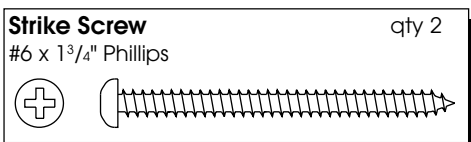
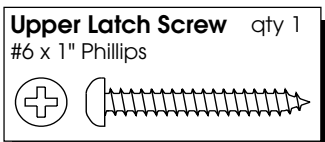
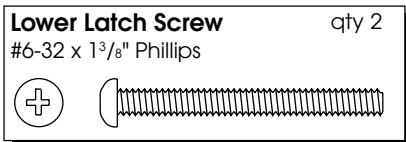


Close the door and position the strike **behind** the latch so it makes contact with the latch bolt and slide bolt as illustrated. Engage the dead bolt to aid in strike alignment, adjusting the strike if necessary.

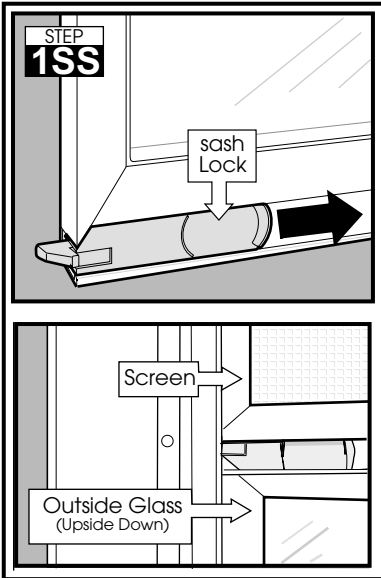
Mark and drill the **top** and **bottom** holes (using a 3/32" drill bit) for the strike in the **center** of the slotted holes.

Install **two** strike screws in the **top** and **bottom** holes. Adjust the strike so the door closes securely.

Shims are included if it is necessary to build out the strike.



SELF-STORING GLASS AND SCREEN OPERATION



To remove the glass, pull the sash locks toward each other. Lift the lower portion of the glass toward you. Pivot the glass sideways and remove it from the door track.

To remove the screen, pull the two screen pins toward each other and lift the screen out of its track.

For weather tight operation, be sure the outer window panel is in the top position.

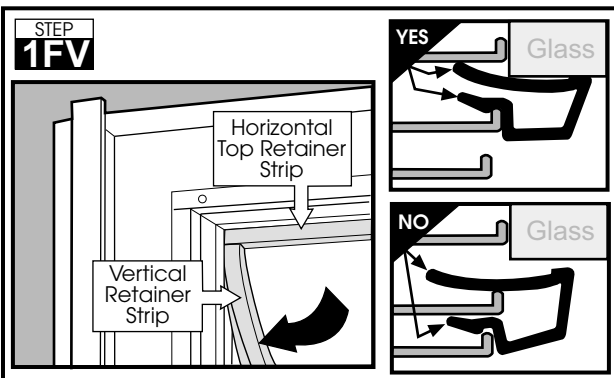
For normal operation, experiment with the glass positions to control the ventilation to suit your needs. The upper and lower glass panels can be repositioned or removed to achieve many ventilation options.

Models with full screens: The screen is an integral part of the window system. If it is removed, a ClearView System Kit (available through Pella) must be installed to maintain proper operation.

OPTIONAL top venting for models with half screens only

For models with half screens - Place the top (outer) glass panel, in the middle track, upside down and lower to the bottom of the door. Position the screen above this glass panel. Place the inner glass panel in its original track and adjust for ventilation preference.

PLEASE NOTE: The door is not water tight with the screen in this position (at the top). This optional glass/screen position is not recommended for installations without a protective overhang or for winter season use.



INTERCHANGEABLE GLASS AND SCREEN OPERATION

The vinyl retainer strip has been designed to **firmly** hold the glass or screen in place for many years. The retainer **may** fit tightly at first, however, subsequent installations will be much **easier** to install.

To install the retainer strips, place the glass or screen into the frame opening with the weather-stripping toward the outside of the door. Make certain the glass or screen is in the outer most track. You may need to lift and set in the lower portion of the glass or screen to seat it properly.

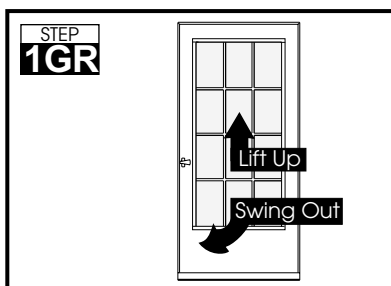
Place the **top horizontal** retainer against the glass or screen. See the illustration for orientation. Start with one end in the corner and press **both** legs of the retainer into the open frame channel (next to the glass/screen) along the entire length of the strip.

Repeat this for the **bottom horizontal** retainer.

Insert the two **vertical** retainers. See the illustration for orientation.

PLEASE NOTE: A hammer may be used to aid in installation **after the strip has been started. Use a piece of wood or cardboard to protect the finish and tap lightly every few inches to snap the retainer in place.**

To remove the retainer strips, start at one of the corners and pull the vertical retainer strip toward the opposite side of the door. If needed, insert a slotted screwdriver between the **bottom** of the **vertical** retainer and the door frame and pry one end out enough to grasp it. Be careful not to scratch or damage the door or retainer. Remove both vertical retainers first then the horizontals.



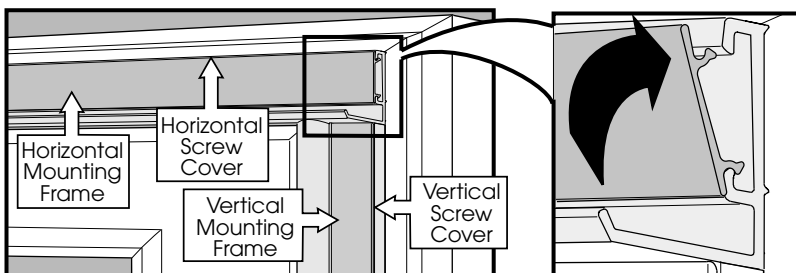
DECORATIVE GRID OPERATION - If included with your model.

Grid removal: If needed, you may remove the grid by lifting the grid up and pivoting the lower portion out of the window opening.

Grid installation: place the grid in the outer most track of the door with the decorative edging toward the outside. Start with the top, then lift and set the lower portion in place.

Note that the grid must be in place for proper weather sealing with the glass panels.


N SCREW COVER INSTALLATION




Place one leg of the **horizontal** (shorter) screw cover onto the **top** mounting frame, **even** with the end as shown. Snap the end into place and continue through the entire length.

Repeat this procedure for the two vertical screw covers.

PLEASE NOTE: You will need to cut the vertical screw covers to match the mounting frames. Measure the mounting frame lengths and score the flat edge of the screw cover with a utility knife, then snap in two.



FIRST CLEANING
Do not use an ammonia-based cleaner for the initial cleaning.



Routine Cleaning:
any household glass cleaner.



Remove Excess Silicone Sealant



CLEANING THE GLASS

PLEASE NOTE: Do not use an ammonia based cleaner for the first cleaning of the glass.

THE FIRST CLEANING OF THE GLASS should be done with a mixture of 1 part vinegar to 4 parts water or a Feldspar based cleaning aid, to remove the protective coating from the glass.

Routine cleaning: After the first cleaning as described above, any household glass cleaner may be used.

CLEANING THE DOOR

Use a soft cloth with mild soap and water or any household grease-cutting cleaner to clean the door.

PLEASE NOTE: Silicone is used in the manufacturing of your door to seal the corners and edges. Occasionally a small amount of silicone is left on the door surface. This is easily rubbed off using your finger.

PLEASE NOTE: Thin marks on the painted aluminum surfaces of the door can be removed using turpentine or a household grease-cutting cleaner such as Fantastic or Formula 409.

PELLA® STORM DOORS LIMITED WARRANTY

Congratulations on choosing a Pella storm door to protect and beautify your home. This superior quality door has been designed to give you years of trouble-free service, and you are protected by this limited warranty:

Pella warrants to the **ORIGINAL HOMEOWNER PURCHASER** of this storm door that it will, without charge to the purchaser, repair or exchange, at its option, any door determined to be defective in material or workmanship for 20 years after the purchase date. The purchaser will be responsible for transporting the door to and from the nearest Pella storm door dealer. Should the door be determined to be defective in material or workmanship **AFTER 20 years** from the purchase date, the original purchaser may buy one new Pella storm door at 50% of the then-current manufacturer's suggested list price for as long as the original purchaser owns the home on which the door was installed. The purchase must be made directly from the factory, and all transportation charges are the responsibility of the purchaser.

Should the door be determined to be defective and the purchaser incurs a reinstallation cost **within three years of the purchase date**, he or she may be reimbursed for these costs up to a maximum of \$25.00, upon furnishing a copy of the invoice for the reinstallation costs.

As a condition of this warranty, it is required that the door be used for residential use only in an owner-occupied home, that it be installed properly as an operating door according to manufacturer's instructions, and that it not be altered in any way. For multi-unit housing applications, ask your dealer for a copy of the appropriate warranty or phone Pella's Customer Service Department at the phone number listed below. This warranty is not transferable.

To make a claim under this warranty, you should:

- a) Call our Customer Service Department at 1-888-646-5354 or write to Pella Warranty Service; 2288 University Avenue; St. Paul, MN 55114 USA.
- b) Furnish the original or a copy of the sales receipt or other documents showing the original purchase date and that you are the original purchaser of this door. Exchange is limited to supplying a replacement door of comparable size, style, and original color and does not include any cost of removal or installation except as noted above.

We will do our best to contact you within seven (7) days after your inquiry reaches us.

The warranty on the latch set and air closer is one year, and any labor charges are not covered. This warranty excludes all damage to glass and screen. This warranty does not cover problems caused by improper storage, handling, installation, use, modification, or maintenance, by Acts of God or by accidents, including accidental glass breakage. It does not apply to normal wear or discoloration of finish; finish problems caused by mechanical damage or abrasion; normal effects of sun and weather, including acid rain, salt spray, or other corrosive elements; damage caused by severe wind; or damage caused by customer abuse or neglect. Brass handle set is guaranteed not to tarnish and carries a lifetime finish warranty for as long as the purchaser owns their home.

THIS WARRANTY EXCLUDES ALL INCIDENTAL AND CONSEQUENTIAL DAMAGES. Nothing in this document shall give rise to or extend the period of any warranties implied under state or provincial law, and no implied warranty shall extend beyond the periods covered by this written warranty. Neither Pella Corporation nor any seller of Pella products will be responsible for incidental or consequential damages which may result from a product defect or malfunction. Some states do not allow the exclusion or limitation of incidental or consequential damages, so the above limitation or exclusion may not apply to you. This warranty gives you specific legal rights, and you may have additional rights which vary from state to state.



EFFECTIVE APRIL 1, 2000

© Pella Corp., 060198 16110

Need a part?
Don't Go Back To Your Store!
Call Our Parts **HOTLINE** Toll-Free
1-888-646-5354
You will need your model and registration numbers

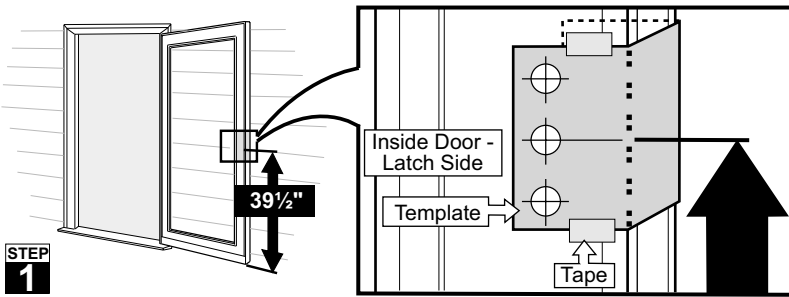


2109 4TH AVENUE SOUTH
CLEAR LAKE, IA 50428 USA
1-888-646-5354

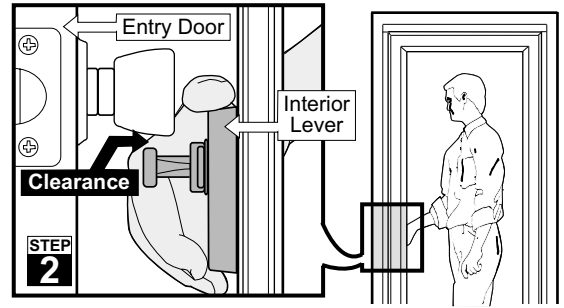
A NOTE TO THE INSTALLER:
THIS OWNER'S GUIDE IS THE PROPERTY OF THE HOMEOWNER AND MUST BE GIVEN TO THE HOMEOWNER UPON COMPLETION OF THE INSTALLATION.

HANDLE INSTALLATION INSTRUCTION

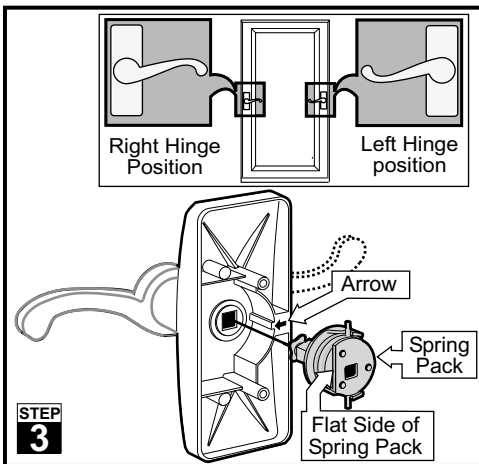
Use this installation sheet when instructed to install the handle set as indicated in your Owner's Manual and Installation Guide. The handle styles illustrated may vary by model.



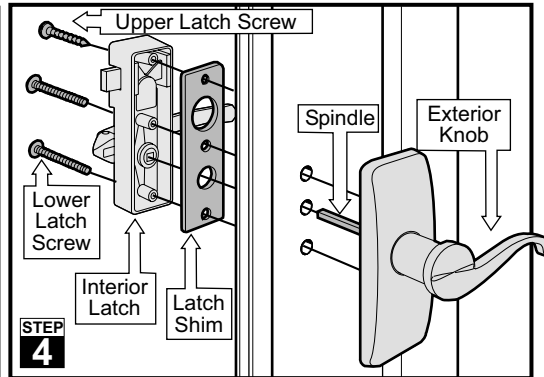
STEP 1
Cut out the template at the bottom of this page and **fold** on the **two** lines as indicated.
Place the template on the **latch** side of the door. Align the **center** hole, 39-1/2" up from the **bottom** of the door.
Make certain the template holes are plumb (vertically level) and tape in place.



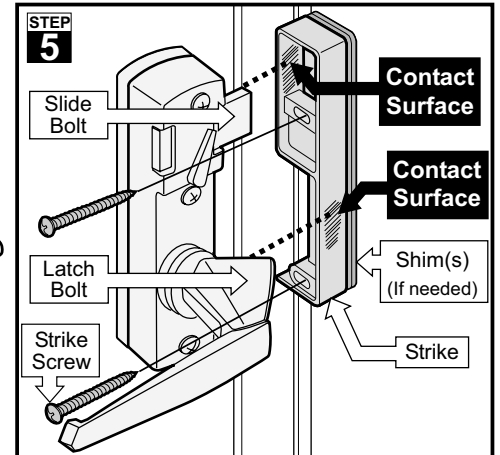
STEP 2
Check to make sure the interior lever **will not** interfere with the knob or handle of your entry door.
Please note: If there is interference, move the template up or down enough to correct for clearance.
Center punch the hole locations, then remove the template.
Drill 5/16" holes halfway through the door on one side and repeat for the other side.



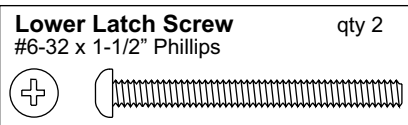
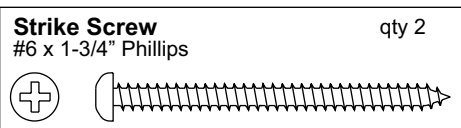
STEP 3
PLEASE NOTE: Your lever style may vary from the illustrations shown.
Determine whether you have a right or left hinged **door** installation (when viewed from the outside).
Rotate the exterior lever to the correct position and insert the spring pack **securely** into the opening with the **flat** side of the spring pack **away** from the **arrow** as shown.



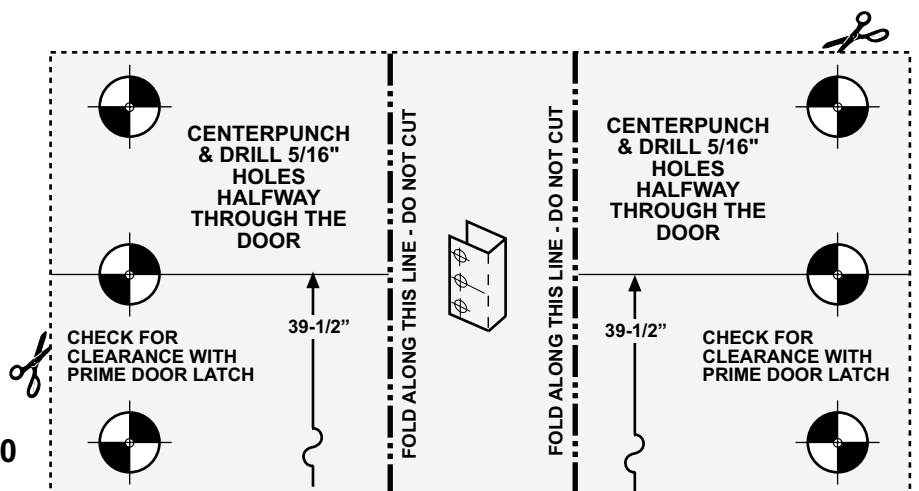
STEP 4
From the **outside** of the door, insert the spindle into the square opening of the exterior lever, then set the lever into door.
From the **inside**, position the interior latch and latch shim onto the spindle.
Secure using **two** lower latch screws into the **lower** two holes of the interior latch.
Install the upper latch screw in the **top** hole location, predrill using a 3/32" drill bit, 1/2" or less through the door.
PLEASE NOTE: To make certain you do not drill too far into the door, use a piece of tape to mark the drill depth (1/2") on the drill bit.



STEP 5
Close the door and position the strike so it makes contact with the latch bolt and slide bolt as illustrated. Engage the slide bolt to aid in strike alignment.
Mark and drill the holes (using a 3/32" drill bit) in the **center** of the slotted holes.
Install **two** strike screws. Adjust the strike so the door closes securely.
Shims are included if it is necessary to build out the strike.

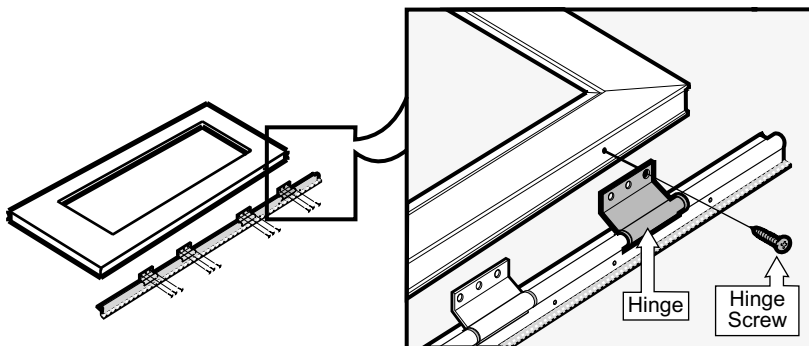


Part Number 19830
Revision 091001



INSTALLATION SCREWS, SUPPLEMENT INSTRUCTION

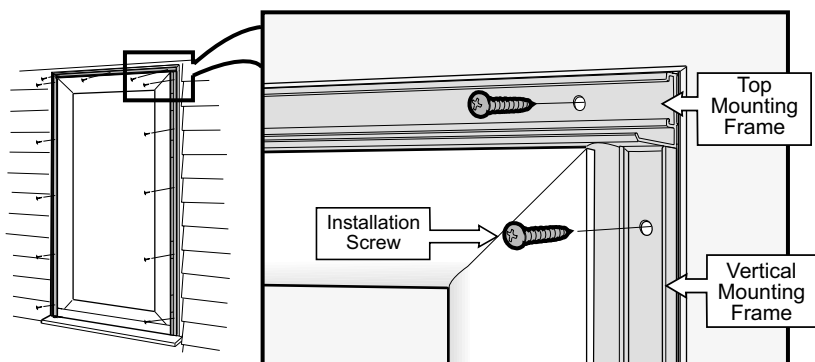
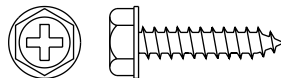
Use this supplement along with the Installation Guide included with the door. This supplement indicates the screws to use for your storm door installation.



HINGE SCREWS.

Use the twelve, #8 x 3/4" unpainted hex-head screws for the hinge locations shown.

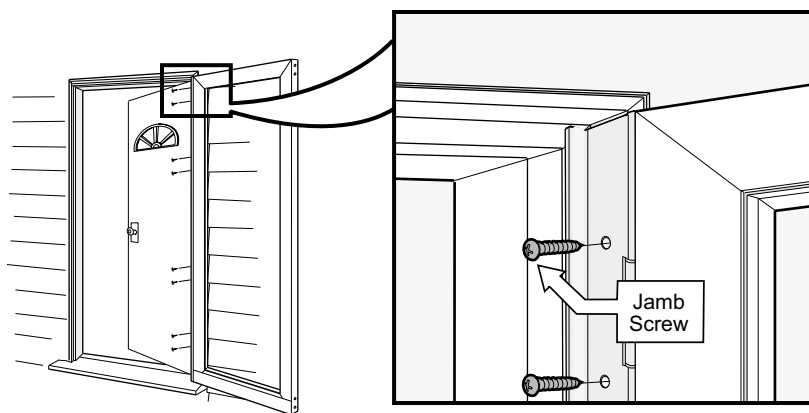
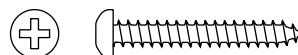
#8 x 3/4" phillips hex qty.12
unpainted



INSTALLATION SCREWS.

Use the thirteen, #6 x 1" pan-head screws for the outer installation screws on the hinge, latch and top mounting frames. Note that models without screw covers will use color-matched screws.

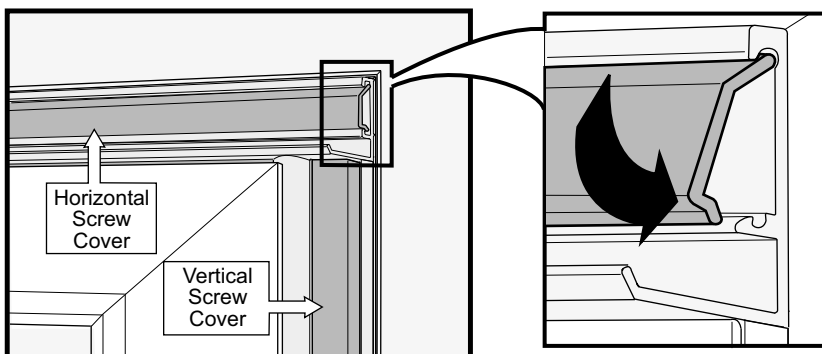
#6 x 1" phillips pan qty.13
unpainted for models with screw covers.
color-matched for models without screw cover.



JAMB SCREWS.

Use the eight, #8 x 3/4" unpainted pan-head screws for the inside location shown.

#8 x 3/4" phillips pan qty. 8
unpainted



SCREW COVER INSTALLATION. [If included with your model]

Install the screw covers by first inserting the angled end into the outermost track, then snapping the screw cover into place as shown.